



## MASTER PRECISION LEVELS

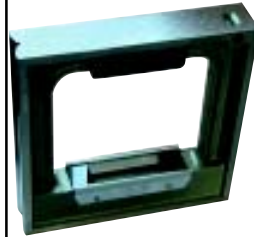
Use for accurately checking the work of machinists and toolmakers, the setting up of machinery, and other work that requires extreme level accuracy. The body of level is made of cast iron.

Base is hand scraped for extreme accuracy.



Inch			Metric		
Size	Model No.	Model No.	Size	Model No.	Model No.
6"	639-3606	639-3616	150mm	639-3406	639-3506
8"	639-3608	639-3618	200mm	639-3408	639-3508
10"	639-3610	639-3620	250mm	639-3410	639-3510
12"	639-3612	639-3622	300mm	639-3412	639-3512

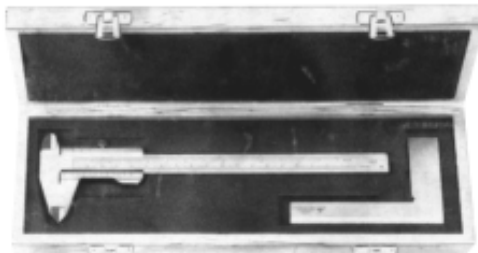
## PRECISION FRAME SPIRIT LEVELS



- Use for adjusting and checking horizontal and vertical surfaces and shafts.
- Sensitivity 0.0002" per 10", .0005" per 10", 0.02mm per 1000mm, 0.05mm per 1000mm.
- 2 Side with flat bearing surfaces and 2 sides with flat plus Vee bearing surfaces.
- Heat insulating top handle.

Inch			Metric	
Dim.	Model No.	Model No.	0.02mm per 1000mm	0.05mm per 1000mm
6x6"	639-3906	639-3916	639-3706	639-3806
8x8"	639-3908	639-3918	639-3708	639-3808
10x10"	639-3910	639-3920	639-3710	639-3810
12x12"	639-3912	639-3922	639-3712	639-3812

## MEASURING TOOL SETS



### 2 PIECE IN WOODEN BOX

#### A-Type Feature:

One 0-150mm Vernier Caliper

- Mono-Block, Thumb lock, 0.05mm

One 90° Knife Edge Square

- DIN 875/1, 100x70mm

Model No. 135-2001

Model No. 13w-2012 Empty wooden box for 135-2001, 135-2002.

#### B-Type Feature:

One 6" Vernier Caliper

- Graduation: 1/128"

One 90° Knife Edge Square

- DIN 875/1, 100x70mm

Model No. 135-2002



#### C-Type Feature:

One 6" Vernier Caliper

- Graduation: 1/128"

One 0-1" Outside Micrometer

Model No. 135-2003

Model No. 13w-2034 Empty wooden box for 135-2003, 135-2004.

#### D-Type Feature:

One 0-150mm Vernier Caliper

- Mono-Block, Thumb lock, .05mm

One 0-25mm Outside Micrometer

Model No. 135-2004

### 3 PIECE IN WOODEN BOX



#### A-Type Feature:

One 0-150mm Vernier Caliper

- Mono-Block, Thumb lock, .05mm

One 0-25mm Outside Micrometer

- Chrome-Plated

One 5-30mm Inside Micrometer

Model No. 135-3001

Model No. 13w-3012 Empty wooden box for 135-3001, 135-3002.

#### B-Type Feature:

One 0-6"mm Vernier Caliper

- Graduation: 1/128"

One 0-1" Outside Micrometer

One 0.2"-1.2" Inside Micrometer

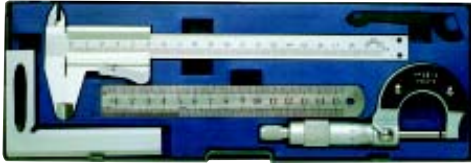
Model No. 135-3002



# Measuring Tools

## MEASURING TOOL SETS

### 4 PIECE IN PLASTIC BOX



#### Model No. 13P-4012

Empty plastic box for 135-4001, 135-4002.

#### Model No. 13P-4034

Empty plastic box for 135-4003, 135-4004.

#### A-Type Feature:

- One 0-150mm Vernier Caliper
    - Mono-Block, Thumb lock, 0.05mm
  - One 0-25mm Outside Micrometer
  - One 90° Knife Edge Square
    - DIN 875/1, 100x70mm
  - One 150MM/6" Stainless Steel Ruler
- Model No. 135-4001**

#### B-Type Feature:

- One 6" Vernier Caliper
    - Graduation 1/128"
  - One 0-1" Outside Micrometer
  - One 90° Knife Edge Square
    - 100x70mm
  - One 150MM/6" Stainless Steel Ruler
- Model No. 135-4002**

#### C-Type Feature:

- One 0-150mm Dial Caliper
    - Graduation 0.02mm
  - One 0-25mm Outside Micrometer
  - One 90° Knife Edge Square
    - DIN 875/1, 100x70mm
  - One 150MM/6" Stainless Steel Ruler
- Model No. 135-4003**

#### D-Type Feature:

- One 6" Dial Caliper
    - Graduation 0.001"
  - One 0-1" Outside Micrometer
  - One 90° Knife Edge Square
    - 100x70mm
  - One 150MM/6" Stainless Steel Ruler
- Model No. 135-4004**

### 5 PIECE IN WOODEN BOX



#### A-Type Feature:

- One 0-150mm Vernier Caliper
    - Mono-Block, Thumb lock, 0.05mm
  - One 0-25mm Digital Readout Outside Micrometer
  - One 0-200mm Depth Gauge
    - Graduation 0.05mm
  - One 90° Knife Edge Square
    - DIN 875/1, 100x70mm
  - One Straight Edge Ruler
    - DIN 874/0, 100mm
- Model No. 135-5001**

#### B-Type Feature:

- One 0-6" Vernier Caliper
    - Graduations 1/128"
  - One 0-1" Digital Readout Outside Micrometer
  - One 0-8" Depth Gauge
    - Graduations 1/128"
  - One 90° Knife Edge Square
    - DIN 875/1, 100x70mm
  - One Straight Edge Ruler
    - DIN 874/0, 100mm
- Model No. 135-5002**

**Model No. 13w-5012** Empty wooden box for 135-5001, 135-5002.

#### C-Type Feature:

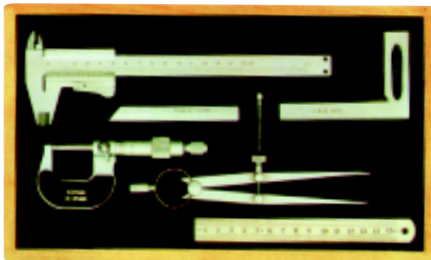
- One 0-150mm Vernier Caliper
    - Mono-Block, Thumb lock, .05mm
  - One 0-25mm Outside Micrometer
  - One 90° Knife Edge Square
    - DIN 875/1, 100x70mm
  - One 150MM/6" Stainless Steel Ruler
  - One Steel Scriber
- Model No. 135-5003**

#### D-Type Feature:

- One 0-6" Vernier Caliper
    - 1/128"
  - One 0-1" Outside Micrometer
  - One 90° Knife Edge Square
    - DIN 875/1, 100x70mm
  - One 150MM/6" Stainless Steel Ruler
  - One Steel Scriber
- Model No. 135-5004**

**Model No. 13w-5034** Empty wooden box for 135-5003, 135-5004.

### 6 PIECE IN WOODEN BOX



#### A-Type Feature:

- One 0-150mm Vernier Caliper
    - Mono-Block, Thumb lock, 0.05mm
  - One 0-25mm Outside Micrometer
  - One 90° Knife Edge Square
    - DIN 875/1, 100x70mm
  - One 150MM/6" Stainless Steel Ruler
  - One Steel Scriber
  - One Steel Divider
- Model No. 135-6001**

#### B-Type Feature:

- One 0-6" Vernier Caliper
    - Graduation 1/128"
  - One 0-1" Outside Micrometer
  - One 90° Knife Edge Square
    - DIN 875/1, 100x70mm
  - One 150MM/6" Stainless Steel Ruler
  - One Steel Scriber
  - One Steel Divider
- Model No. 135-6002**

**Model No. 13w-6012** Empty wooden box for 135-6001, 135-6002.

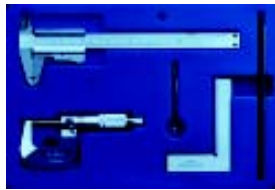


## MEASURING TOOL SETS

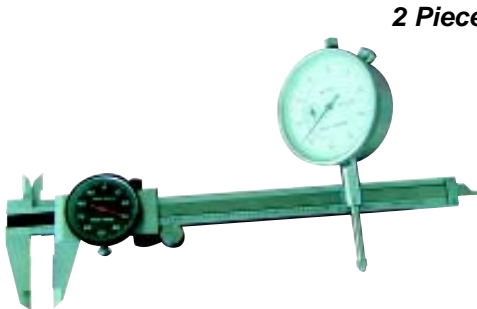
**Model No.135-2011**  
**2pcs/set in plastic box**  
**Including:** 0-0.8mm test indicator 605-4713  
 & Mini magnetic stand 17kg 625-0581  
**Plastic box for 135-2011: Model No.135-CP26**



**Model No.135-3011**  
**3pcs/set in plastic box.**  
**Including:** 150mm 3-key digital caliper 101-3506,  
 0-25mm outside micrometer 601-4025  
 & 0-10mm dial indicator 605-4125  
**Plastic box for 135-3011: Model No.135-CP22**



**Model No.135-4011**  
**4pcs/set in plastic box.**  
**Including:** 150/6"x1/128"/0.05mm INOX mono-block 818-0158  
 thumb-lock caliper, 25x0.01mm outside micrometer, 601-4025  
 90x100x70mm INOX knife edge square DIN875/00, 638-1015  
 150mm stainless steel straight ruler. 638-9061  
**Plastic box for 135-4011: Model No.135-CP24**



2 Piece Set

Set Model No.	Specification	Individual Model No.	Plastic case Model No.
135-0001	●0-4" Black face Dial caliper ●0-1" Black face Dial indicator	10B-S004 605-4080	135-CP01
135-0004	●0-4" White face Dial caliper ●0-1" White face Dial indicator	10W-S004 605-4070	135-CP01
135-0016	●0-6" Black face Dial caliper ●0-1" Black face Dial indicator	10B-S006 605-4080	135-CP16
135-0017	●0-6" White face Dial caliper ●0-1" White face Dial caliper	10W-S006 605-4070	135-CP16



2 Piece Set

Set Model No.	Specification	Individual Model No.	Plastic case Model No.
135-0002	●0-1" White face Dial indicator ●60kg Magnetic base W/fine adj.	605-4070 625-0341	135-CP02
135-0005	●0-1" Black face Dial indicator ●60kg Magnetic base W/fine adj.	605-4080 625-0341	135-CP02
135-0022	●10mm dial indicator ●60kg magnetic stand with fine adjustment and long arm	601-4125 605-3341	135-CP20



2 Piece Set

Set Model No.	Specification	Individual Model No.	Plastic case Model No.
135-0014	●0.03x0.0005" White face test indicator ●1-7/8" test indicator holder	605-4710 625-8522	135-CP14
135-0015	●0.03x0.0005" Black face test indicator ●1-7/8" test indicator holder	605-4709 625-8522	135-CP14



3 Piece Set

## MEASURING TOOL SETS

Set Model No.	Specification	Individual Model No.	Plastic case Model No.
135-0008	●0-6" Black face Dial caliper ●0.03x0.0005" Black face test indicator ●0-1x0.0001" Outside micrometer	10B-S006 605-4709 601-0111	135-CP08
135-0009	●0-6" White face Dial caliper ●0.03x0.0005" White face test indicator ●0-1x0.0001" Outside micrometer	10W-S006 605-4710 601-0111	135-CP08



# Measuring Tools



**6 Piece Set**

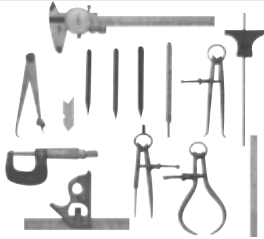
Set Model No.	Specification	Individual Model No.	Plastic case Model No.
135-0012	●0-6" White face Dial caliper	10W-S006	135-CP12
	●0-1" White face Dial indicator	605-4070	
	●0.03x0.0005" White face test indicator	605-4710	
	●0-1x0.0001" Outside micrometer	601-0111	
	●60kg Magnetic base W/fine adj.	625-0341	
135-0013	●0-6" Black face Dial caliper	10B-S006	135-CP12
	●0-1" Black face Dial indicator	605-4080	
	●0.03x0.0005" Black face test indicator	605-4709	
	●0-1x0.0001" Outside micrometer	601-0111	
	●60kg Magnetic base W/fine adj.	625-0341	
	●22-pc Indicator point set	605-0022	



**6 Piece Set**

Set Model No.	Specification	Individual Model No.	Plastic case Model No.
135-0018	●0-6" White face Dial caliper	10W-S006	135-CP18
	●0-1x.0001"Outside micrometer	601-0111	
	●Square head (638-7759)	638-7756	
	●Protractor head (638-7757)		
135-0019	●Center head (638-7758)	135-CP18	
	●12" Blade (638-7752)		
	4R (8ths, 16ths, 32nds, 64ths)		
	●0-6" Black face Dial caliper		10B-S006
	●0-1x.0001"Outside micrometer		601-0111
	●Square head (638-7759)	638-7756	
	●Protractor head (638-7757)		
	●Center head (638-7758)		
	●12" Blade 4R (638-7752)		
	(8ths, 16ths, 32nds, 64ths)		

WWW.PRECOTOOLS.CN



## 14 PIECE MEASURING TOOL KIT

Model No.135-0000

- 0-1" Micrometer Model No. 601-0111
- 0.0001" Graduation, Carbide Faces.
- 0-100 Dial Reading 6" Dial Caliper Model No.10w-s006
- 6" Flex Scale" 8ths, 16ths, 32ths&64ths Model No.638-7854
- 6" Combination Square Model No. 638-7750



## BENCH CENTER

For accurate concentricity inspection.

- Features:
- 100mm/4" Outside Caliper Model No.108-1104
  - 100mm/4" Inside Caliper 108-1004
  - 4" Dividers Spring Type Model No. 108-0904
  - 6" Depth Gages Model No. 615-6122
  - Center Gage Model No.615-6300
  - 4" Hermaphrodite Caliper Model No. 108-1204
  - 5-1/2" Scriber Model No. 830-0382
  - 3piece Center Punch Set Model No. 830-0240

Distance Between Center	Center height	Weight	Model No.
500mm	170mm	80kgs	640-2001
600mm	170mm	85kgs	640-2003
1000mm	250mm	90kgs	640-2002

## PROFILE PROJECTORS

Horizontal Benchtop Model



Model No. 640-2000

- Reliable quality.
- Compact workstage with two dial indicators for measuring travels of X and Y directions.
- Complete set of the objective lens magnifications for different measuring range.
- Projection lens for a large view field and sharp image at the optimum intensity of brightness.

Protractor Screen.....14(355.6mm)  
 Magnifications.....10X, 20X, 40X  
 Max. Workpiece Diameter.....1.4(35.6mm), 0.7(17.8mm), 0.35(8.9mm)  
 Workstage travel.....6(152.4mm) horizontal, 2(50.8mm) vertical, Focus1(25.4mm)  
 Measurement Display system....Dial Indicator 0-1"(.001 or 30mm(.01mm)  
 Vernier Protractor graduation......5"  
 Dimensions.....900mmx400mmx800mm