

## FACE MILL ARBORS FOR CNC

### BT Shank

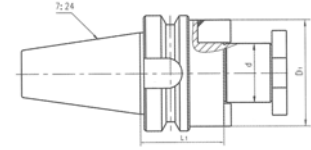
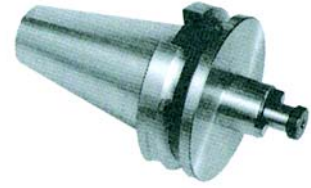
Shank x d-L1	Model No
BT30x16-60	824-4301
BT30x22-60	824-4302
BT30x27-60	824-4303
BT30x32-60	824-4304
BT30x50-70	824-4305
BT30x40-61	824-4306
BT40x16-45	824-4401
BT40x16-60	824-4402
BT40x16-120	824-4403
BT40x22-45	824-4404
BT40x22-60	824-4405
BT40x22-100	824-4406
BT40x22-120	824-4407
BT40x27-45	824-4408
BT40x27-60	824-4409
BT40x27-75	824-4410
BT40x27-105	824-4411
BT40x27-120	824-4412
BT40x32-45	824-4413
BT40x32-60	824-4414
BT40x32-75	824-4415
BT40x32-120	824-4416
BT40x40-60	824-4417
BT40x50-70	824-4418

### BT Shank

Shank x d-L1	Model No
BT50x16-60	824-4501
BT50x16-75	824-4502
BT50x16-120	824-4503
BT50x22-60	824-4504
BT50x22-75	824-4505
BT50x22-100	824-4506
BT50x22-120	824-4507
BT50x27-60	824-4508
BT50x27-75	824-4509
BT50x27-105	824-4510
BT50x32-60	824-4511
BT50x32-75	824-4512
BT50x32-105	824-4513
BT50x40-60	824-4514
BT50x40-75	824-4515
BT50x40-90	824-4516
BT50x40-105	824-4517
BT50x50-60	824-4518
BT50x50-70	824-4519

### DIN69871 Shank

Shank x d-L1	Model No
30x16-60	824-3301
30x22-60	824-3302
30x27-60	824-3303
30x32-60	824-3304
30x40-60	824-3305
30x50-70	824-3306
40x16-60	824-3401
40x22-60	824-3402
40x27-60	824-3403
40x32-60	824-3404
40x40-60	824-3405
40x50-70	824-3406
50x16-60	824-3501
50x22-60	824-3502
50x27-60	824-3503
50x32-60	824-3504
50x40-60	824-3505
50x50-70	824-3506



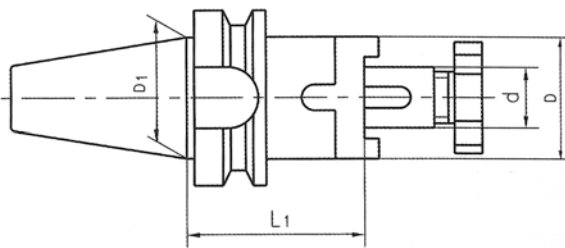
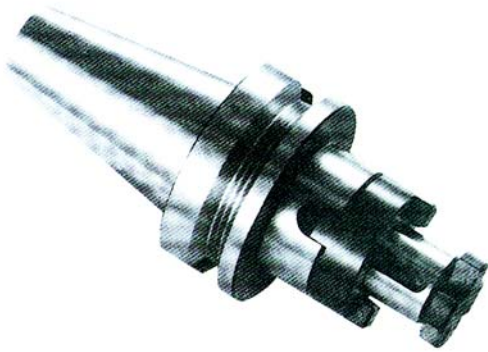
## COMBI FACE MILL ARBORS FOR CNC

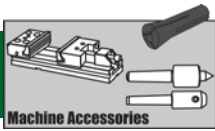
### BT Shank

Shank x d-L1	Model No
BT30x13-55	824-1301
BT30x16-55	824-1302
BT30x16-100	824-1303
BT30x22-55	824-1304
BT30x22-100	824-1305
BT30x27-55	824-1306
BT30x27-100	824-1307
BT30x32-60	824-1308
BT30x32-100	824-1309
BT30x40-60	824-1310
BT30x40-100	824-1311
BT40x13-55	824-1401
BT40x16-55	824-1402
BT40x16-100	824-1403
BT40x22-55	824-1404
BT40x22-100	824-1405
BT40x27-55	824-1406
BT40x27-100	824-1407
BT40x32-60	824-1408
BT40x32-100	824-1409
BT40x40-60	824-1410
BT40x40-100	824-1411
BT50x13-63	824-1501
BT50x16-63	824-1502
BT50x16-100	824-1503
BT50x22-70	824-1504
BT50x22-100	824-1505
BT50x27-70	824-1506
BT50x27-100	824-1507
BT50x32-70	824-1508
BT50x32-100	824-1509
BT50x40-75	824-1510
BT50x40-100	824-1511
BT50x50-75	824-1512
BT50x50-125	824-1513

### DIN 69871 Shank

Shank x d-L1	Model No
30x13-55	824-2301
30x16-55	824-2302
30x16-100	824-2303
30x22-55	824-2304
30x22-100	824-2305
30x27-55	824-2306
30x27-100	824-2307
30x32-60	824-2308
30x32-100	824-2309
30x40-60	824-2310
30x40-100	824-2311
40x13-55	824-2401
40x16-55	824-2402
40x16-100	824-2403
40x22-55	824-2404
40x22-100	824-2405
40x27-55	824-2406
40x27-100	824-2407
40x32-60	824-2408
40x32-100	824-2409
40x40-60	824-2410
40x40-100	824-2411
50x13-55	824-2501
50x16-55	824-2502
50x16-100	824-2503
50x22-55	824-2504
50x22-100	824-2505
50x27-55	824-2506
50x27-100	824-2507
50x32-60	824-2508
50x32-100	824-2509
50x40-60	824-2510
50x40-100	824-2511
50x50-70	824-2512
50x50-125	824-2513

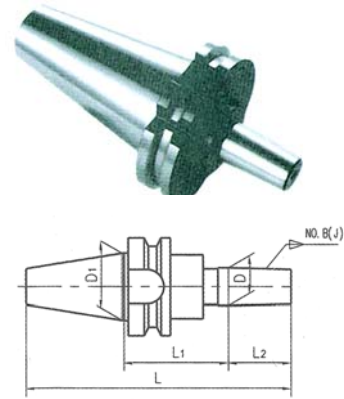




# Machine Accessories

## DRILL CHUCK ARBORS FOR CNC

Taper	BT Shank			DIN69871.40
	BT 30	BT 40	BT 50	Shank
JT 1	290-8001	290-8101	290-8201	290-8501
JT 2	290-8002	290-8102	290-8202	290-8502
JT 2S	290-8032	290-8132	290-8232	290-8532
JT 3	290-8003	290-8103	290-8203	290-8503
JT 4	290-8004	290-8104	290-8204	290-8504
JT 5	290-8005	290-8105	290-8205	290-8505
JT 6	290-8006	290-8106	290-8206	290-8506
JT 33	290-8033	290-8133	290-8233	290-8533
B 10	290-8010	290-8110	290-8210	290-8510
B 12	290-8012	290-8112	290-8212	290-8512
B 16	290-8016	290-8116	290-8216	290-8516
B 18	290-8018	290-8118	290-8218	290-8518



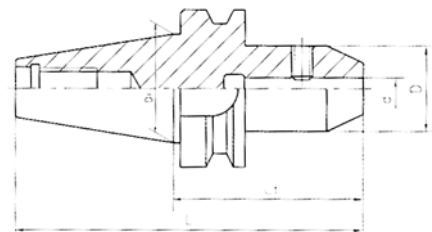
### BT Shank

Shank x d-L1	Model No
BT30x6-60	824-6306
BT30x8-60	824-6308
BT30x10-60	824-6310
BT30x12-60	824-6312
BT30x14-60	824-6314
BT30x16-75	824-6316
BT30x18-75	824-6318
BT30x20-75	824-6320
BT30x25-90	824-6325
BT40x6-50	824-6406
BT40x8-50	824-6408
BT40x10-63	824-6410
BT40x12-63	824-6412
BT40x14-63	824-6414
BT40x16-63	824-6416
BT40x16-70	824-6417
BT40x18-63	824-6418
BT40x20-63	824-6420
BT40x20-70	824-6421
BT40x25-100	824-6425
BT40x32-100	824-6432
BT40x32-110	824-6433
BT40x40-120	824-6440
BT50x6-63	824-6506
BT50x8-63	824-6508
BT50x10-63	824-6510
BT50x12-80	824-6512
BT50x16-80	824-6516
BT50x20-80	824-6520
BT50x25-100	824-6525
BT50x25-105	824-6526
BT50x32-100	824-6532
BT50x32-105	824-6533
BT50x40-115	824-6540
BT50x40-120	824-6541
BT50x42-120	824-6542
BT50x50-150	824-6550

## END MILL ARBORS FOR CNC

### DIN69871 Shank

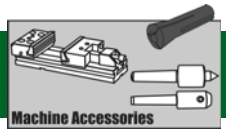
Shank x d-L1	Model No
30x6-50	824-5306
30x8-50	824-5308
30x10-50	824-5310
30x12-50	824-5312
30x16-50	824-5316
40x6-50	824-5406
40x6-100	824-5407
40x8-50	824-5408
40x8-100	824-5409
40x10-50	824-5410
40x10-100	824-5411
40x12-50	824-5412
40x14-50	824-5414
40x16-63	824-5416
40x18-63	824-5418
40x20-63	824-5420
40x25-100	824-5425
40x32-100	824-5432
40x40-120	824-5440
50x6-63	824-5506
50x8-63	824-5508
50x10-63	824-5510
50x12-63	824-5512
50x14-63	824-5514
50x16-63	824-5516
50x18-63	824-5518
50x20-63	824-5520
50x25-80	824-5525
50x32-100	824-5532
50x40-100	824-5540
50x50-125	824-5550
50x63-150	824-5563



## DIE STOCK AND TAP ADAPTORS (THREADING SETS)

MT3 shank ,die stock  
16,20,25,30mm & tap  
adaptor 8,10,12,16mm.

Model No.318-1900



## ADAPTERS FOR CNC

### Morse Taper Adapters, With Tang, For CNC

Shank-MT-L1	Model No
BT 30-MT 1-50	214-7501
BT 30-MT 2-60	214-7505
BT 30-MT 3-80	214-7510
BT 40-MT 1-50	214-7515
BT 40-MT 2-60	214-7520
BT 40-MT 3-70	214-7525
BT 40-MT 3-75	217-7526
BT 40-MT 4-90	214-7530
BT 40-MT 4-95	214-7531
BT 50-MT 1-45	214-7535
BT 50-MT 2-50	214-7540
BT 50-MT 3-65	214-7545
BT 50-MT 4-85	214-7550
BT 50-MT 4-95	214-7555
BT 50-MT 5-108	214-7560

Shank-MT-L1	Model No
DIN69871.30-MT1-50	214-7601
DIN69871.30-MT2-60	214-7602
DIN69871.30-MT3-75	214-7603
DIN69871.40-MT1-50	214-7611
DIN69871.40-MT2-50	214-7612
DIN69871.40-MT3-70	214-7613
DIN69871.40-MT4-95	214-7614
DIN69871.40-MT5-125	214-7615
DIN69871.50MT1-45	214-7621
DIN69871.50-MT2-60	214-7622
DIN69871.50-MT3-65	214-7623
DIN69871.50-MT4-95	214-7624
DIN69871.50-MT5-105	214-7625

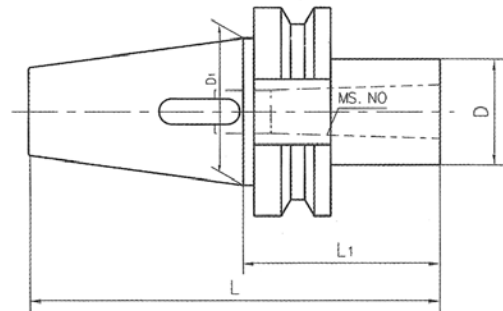


### Morse Taper Adapters With Draw Bar, For CNC

Shank-MT-L1	Model No
BT40-MT1-45	214-7701
BT40-MT1-100	214-7703
BT40-MT2-60	214-7705
BT40-MT2-100	214-7707
BT40-MT3-75	214-7709
BT40-MT4-107	214-7711
BT45-MT1-45	214-7713
BT46-MT2-45	214-7715
BT47-MT3-60	214-7717
BT50-MT1-45	214-7719
BT50-MT2-45	214-7721
BT50-MT3-60	214-7723
BT50-MT4-75	214-7725
BT50-MT5-105	214-7727

### R8 Adapter For CNC

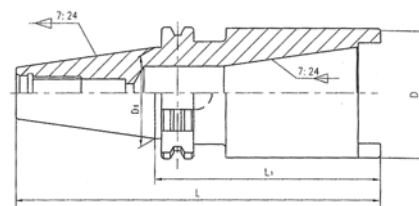
Shank-R8-L1	Model No
BT30-R8-115	214-7901
BT30-R8-135	214-7903
BT30-R8-150	214-7905
BT40-R8-75	214-7907
BT40-R8-95	214-7909
BT40-R8-100	214-7911
BT40-R8-130	214-7913



### 7:24 Adapters For CNC

Shank-ISO-L1	Model No
BT40-ISO30-50	214-7801
BT40-ISO40-100	214-7803
BT50-ISO30-50	214-7805
BT50-ISO40-70	214-7807
BT50-ISO50-120	214-7809

Shank-ISO-L1	Model No
DIN69871.40-ISO30-50	214-7831
DIN69871.40-ISO40-100	214-7833
DIN69871.50-ISO30-50	214-7835
DIN69871.50-ISO40-70	214-7837
DIN6987.50-ISO50-120	214-7839



### EXPENDING ARBORS

Machine these arbors to hold a specific part. For use on lathes, milling machine, grinders, Chucks, collets, fixtures etc.

**Model No. 262-0108**  
**8pcs set of 8 arbors and**  
**hex wrenches on a wooden block.**

Size	Length of Arbor	Model No.
1/4"	3"	262-4016
3/8"	3"	262-4024
1/2"	3"	262-4032
5/8"	3"	262-4040
3/4"	4"	262-4048
7/8"	4"	262-4056
1"	4"	262-4100
1-1/4"	4"	262-4116