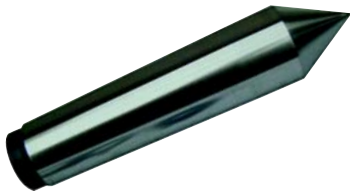


# Machine Accessories

## SOLID LATHE CENTERS



- Hardened and ground to the closest tolerance.
- There are three type to meet your need carbon steel, high speed steel tipped, carbide tipped
- Accuracy 0.01mm

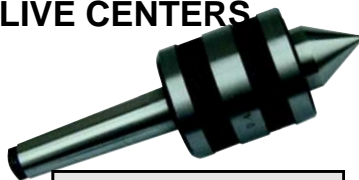
Morse Taper	Overall Length	Carbon Steel Model No.	H.S.S. Model No.	Carbide Tipped Model No.
MT1	80mm/3-3/16"	251-3011	251-3071	251-3051
MT2	100mm/3-15/16"	251-3012	251-3072	251-3052
MT3	125mm/4-15/16"	251-3013	251-3073	251-3053
MT4	160mm/6-5/16"	251-3014	251-3074	251-3054
MT5	200mm/7-7/8"	251-3015	251-3075	251-3055
MT6	270mm/11"	251-3016	251-3076	251-3056
MT7	360mm/14"	251-3017	251-3077	251-3057

## PRECISION LIGHT DUTY LIVE CENTERS



Morse Taper	Accuracy	Model No.
MT1	0.0004"	251-3031
MT2	0.0004"	251-3032
MT3	0.0004"	251-3033
MT4	0.0004"	251-3034
MT5	0.0004"	251-3035
MT6	0.0004"	251-3036
MT7	0.0004"	251-3037

## PRECISION MEDIUM DUTY LIVE CENTERS



Morse Taper	Accuracy	Model No.
MT1	0.0008"	251-3021
MT2	0.0008"	251-3022
MT3	0.0008"	251-3023
MT4	0.0008"	251-3024
MT5	0.001"	251-3025
MT6	0.001"	251-3026

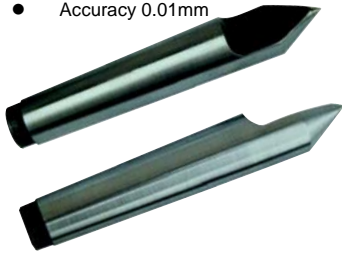
## PRECISION HEAVY DUTY LIVE CENTERS



Morse Taper	Accuracy	Model No.
MT1	0.0003"	251-3001
MT2	0.0003"	251-3002
MT3	0.0003"	251-3003
MT4	0.0003"	251-3004
MT5	0.0004"	251-3005
MT6	0.0004"	251-3006

## HALF-NOTCHED LATHE CENTERS

- Accuracy 0.01mm



Morse Taper	Carbon Steel Model No.	Carbide Alloy Model No.
MT1	251-3801	251-3811
MT2	251-3802	251-3812
MT3	251-3803	251-3813
MT4	251-3804	251-3814
MT5	251-3805	251-3815
MT6	251-3806	251-3816
MT7	251-3807	251-3817

## BULL NOSE LIVE CENTERS



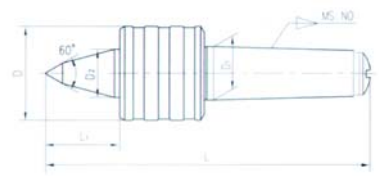
Morse Taper	Small End Dia.	Large End Dia.	Model No.
MT2	1/2"	2-7/16"	251-3702
MT3	3/4"	3"	251-3703
MT3	1-1/4"	4"	251-3704
MT3	1-1/2"	5"	251-3705
MT4	1-3/8"	5"	251-3706
MT4	2"	6"	251-3707
MT5	1-3/8"	6"	251-3708
MT5	2-1/8"	8"	251-3709

## LONG NOSE LIVE CENTER

Head-Driving Type for N/C & Copying Lathes

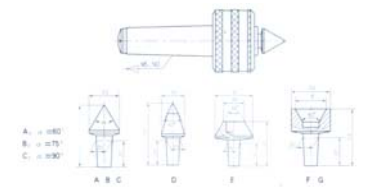
- Usable at high speeds-3,000 RPM on MT3, MT4,2,000 RPM on MT5 and 1500RPM on MT6.
- Run out with in 0.0002".
- Unique head-driving mechanism ensures that no dust, chips, or foreign oils can enter and destroy bearings.

MT	L1(mm)	D (mm)	D1(mm)	D2(mm)	L (mm)	Model No.
MT2	30	40	17.78	18	141	251-3042
MT3	36	45	23.825	22	165	251-3043
MT4	36	45	31.267	22	188	251-3044
MT5	64	78	44.399	40	270	251-3045
MT6	75	102	63.348	50	346	251-3046



## MEDIUM DUTY MULTI PURPOSE LIVE CENTER

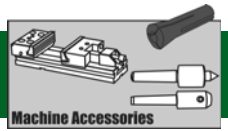
- The body of these sets is constructed similar to medium live centers.
- The sets consists of 3 large male centers, 1 female center, 4 smaller, different sized male center.



MT	D1	L1	A		B		C		D		E		F		G		Head A Model No.	Head B Model No.	Head C Model No.	Head D Model No.	Head E Model No.	Head F Model No.	Head G Model No.	Sets Model No.			
			D2	L2	D2	L2	D2	L2	D2	L2	D2	D3	L2	D2	L2	d									D2	L2	d
MT2	10	20	16	39	16	35.5	16	33	16	46	25	10	40	16	36	10	20	39	16	251-3201	251-3202	251-3203	251-3204	251-3205	251-3206	251-3207	251-3082
MT3	12	24	20	48	20	43.5	20	40.5	18	56	35	15	50	22	42	18	35	48	30	251-3301	251-3302	251-3303	251-3304	251-3305	251-3306	251-3307	251-3083
MT4	15	30	28	61.5	28	55.5	28	51.5	26	73	55	30	61.5	40	55	35	55	60	48	251-3401	251-3402	251-3403	251-3404	251-3405	251-3406	251-3407	251-3084
MT5	20	40	36	80	36	72.45	36	66.87	36	101	70	41	78	60	81	50	70	85	61	251-3501	251-3502	251-3503	251-3504	251-3505	251-3506	251-3507	251-3085
MT6	30	55	55	117	55	113	55	108	50	138	90	50	107.5	75	110	60	90	116	75	251-3601	251-3602	251-3603	251-3604	251-3605	251-3606	251-3607	251-3086

WWW.PRECOTOOLS.CN

# Machine Accessories



## VERT. 5C ANGLE COLLET FIXTURES

(Model A)

Model No. 235-6090

Base Size: 2-1/2"x7-3/4"

Height: 4"



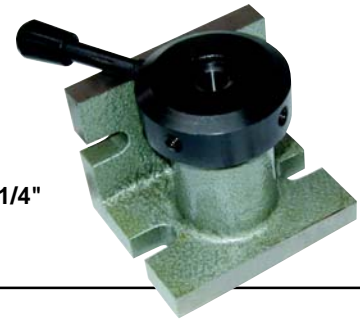
## H/V 5C ANGLE COLLET FIXTURES

(Model B)

Model No. 235-6095

Base Size: 4-1/4"x4-1/4"

Height: 4"-1/4"



## H/V 5C ANGLE COLLET FIXTURES

(Model C)



## H/V 5C COLLET FIXTURES

Base In	Height In	Base In	Height In	Model No.
Horizontal	Horizontal	Vertical	Vertical	
5x4"	3-5/8"	5x3-5/8"	4"	235-6080

Base	Height	Model No.
5x3-5/8"	3-3/4"	235-6085

## END MILL GRINDING FIXTURES

- The fixture uses 5C collects (no more bushings to lose) which means any shank-size end mill from 1/16" to 1-1/8" can be ground. Shell mills can easily be held with straight shank arbors.
- Grinds 2,3,4,6,8 & 12 fluted end mills and shell mills. Faces only!
- Clearance and relief angles are built into base.
- Solid 2-1/2" x 4-1/2" base ground on bottom for sure contact with magnet.
- Black oxide finish.



Model No. 287-6000

## END MILL CUTTERS/SHARPENERS

### TYPE 287



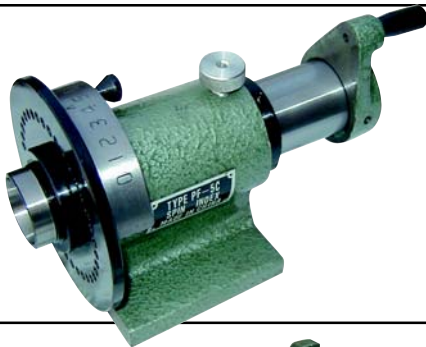
- Designed to accomplish all sharpening need.
- Diameter of shank of end mill is 3/8", 1/2", 5/8".
- It may be equally divided into 2,3,4,6, 8.

Model No. 231-0287

## 5C SPIN INDEX FIXTURES

Model No. 235-6011

- Hardened and precision ground spindle.
- 0.0004" T.I.R spindle accuracy.
- Super time saver.
- Applicable to all milling machines, surface grinders and inspection equipment.
- Precision ground 36 position index plate.
- Direct indexing in ten steps, graduated in 5; increments.



## 5C COLLET INDEX FIXTURES

- Threaded spindle is hardened and ground (2-1/4"-8TPI).
- Single lever action activates the indexing mechanism.
- Precision ground index plate has 24 indexing locations in fifteen degree.
- 15; increments, any of which can be masked for greater versatility.

Model No. 235-6200

Specifications	Maximum Variation
Dividing spindle concentricity	0.004"
Cylinder center bore (per 1") concentricity	0.008"
Lateral offset of center slot of dividing spindle	0.008"
Center slot to dividing spindle concentric	0.008"
Spindle center line parallelism	0.008"

