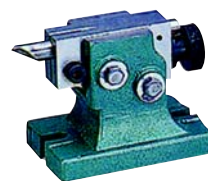
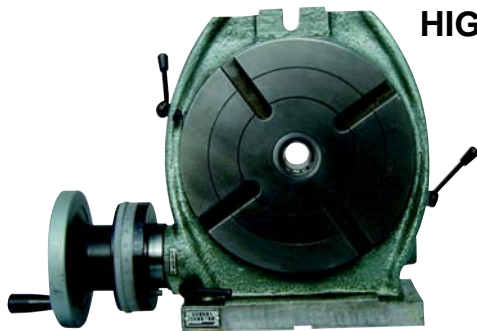


# Machine Accessories

## HIGH PRECISION H/V ROTARY TABLES



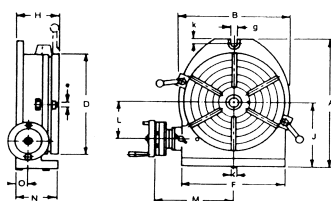
- Extra deep coolant channel.
- Dual positive action locks.

Optional Dividing Plates

- Graduated 360°
- Low profile.
- 10 second vernier reading.

Optional Tailstock

- Gear drive immersed in oil.
- Optional dividing plates and tailstock.
- Gear Ratio 90:1.

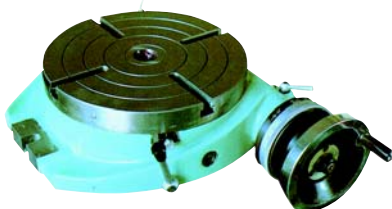


Specifications	Maximum Variation (inches/second)
Clamping surface flatness(concave)	0.0006"
Cylindrical center bore concentricity	0.0008"
Taper center bore concentricity	0.0008"
Surface to base parallelism	0.0008"
Surface to angle face squareness	0.0004"
Surface to center slot squareness	0.0008"

Descriptions	Model No.
8" Horizontal & Vertical Table (YUASA TYPE)	200-1143
10" Horizontal & Vertical Table (YUASA TYPE)	200-1153
12" Horizontal & Vertical Table (YUASA TYPE)	200-1163
Dividing Plate (fits all except 6")	200-1096
Adjustable Tailstock for 8" & 10"	200-1098
Adjustable Tailstock for 12"	200-1100
8" Horizontal & Vertical Table	200-1091
10" Horizontal & Vertical Table	200-1093
12" Horizontal & Vertical Table	200-1095

Table Dia.	A	B	C	D	E	F	G	H	J	K	L	M	N	O	T-Slot Width	Net Weight	Shipping Weight	Model No.
8"	11.200	9.400	0.650	7.872	3MT	8.203	0.570	3.944	5.985	0.610	3.700	7.830	3.880	1.900	0.46564	4lbs	95lbs	200-1143
10"	12.900	11.300	0.552	9.800	3MT	9.960	0.562	4.330	6.750	0.562	4.100	8.625	4.175	1.900	0.46594	4lbs	135lbs	200-1153
12"	16.125	14.250	0.710	12-5/8	4MT	12.625	0.725	4.750	8.250	0.725	5.25	10.250	4.640	1.900	0.54520	9lbs	250lbs	200-1163

## HIGH PRECISION HORIZONTAL ROTARY TABLES



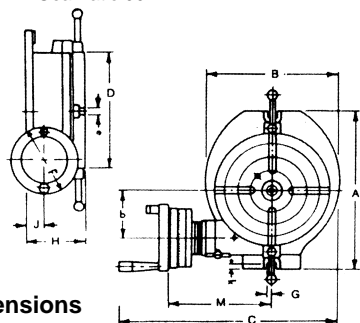
- Extra deep coolant channel.
- Dual positive action locks.
- Gear ratio 90:1.

Special design features include:

- Graduated 360°
- Low profile.
- Satin chrome dials.

Optional Dividing Plate

- Gear drive immersed in oil.
- 10 second vernier reading.
- Optional dividing plates and tailstock.

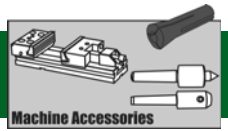


Dimensions

Specifications	Maximum Variation (inches/second)
Clamping surface flatness(concave)	0.0006"
Cylindrical center bore concentricity	0.0008"
Taper center bore concentricity	0.0008"
Surface to base parallelism	0.0008"
Surface to angle face squareness	0.0004"
Surface to center slot squareness	0.0008"

Descriptions	Model No.
6" Horizontal	200-1076
8" Horizontal	200-1078
10" Horizontal	200-1080
12" Horizontal	200-1082
Dividing Plate (Fits all except 6")	200-1096

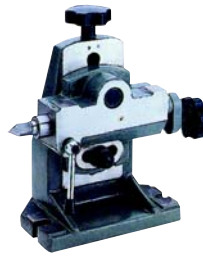
Table Dia.	A	B	C	D	E	F	G	H	J	K	L	M	T-Slot Width	Net Weight	Shipping Weight	Model No.
6"	10-1/4	7-3/4	13-1/16	6-19/64	2MT	4-15/16	0.224	3-5/64	1	45/64	3	5	0.39	36lbs	48lbs	200-1076
8"	11-7/16	9-5/16	14-1/4	7-7/8	3MT	4-15/16	9/32	3-7/32	1	13/16	3-1/2	5-11/16	0.456	50lbs	61lbs	200-1078
10"	13	11-1/4	16-5/8	9-15/16	3MT	4-15/16	9/32	3-11/16	1	13/16	3-7/8	9-1/2	0.465	82lbs	93lbs	200-1080
12"	16-1/8	14-3/16	19-9/16	12-5/8	4MT	4-15/16	0.354	4-1/16	1-3/8	1	4-1/4	12-5/16	0.545	153lbs	167lbs	200-1082



## PRECISION INCLINEABLE ROTARY TABLES



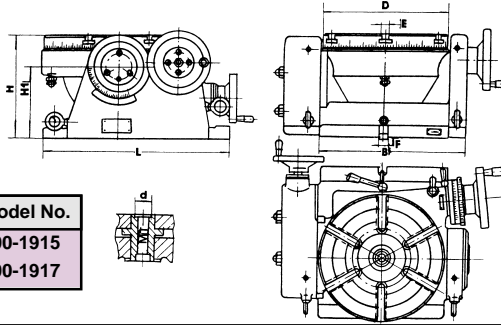
- Satin chrome dials.
- Gear ratio 90:1.
- Low profile.



- Gear drive immersed in oil.
- 10 second vernier reading.
- Optional dividing plates and tailstock.



- Dual positive action locks.
- Extra deep coolant channel.

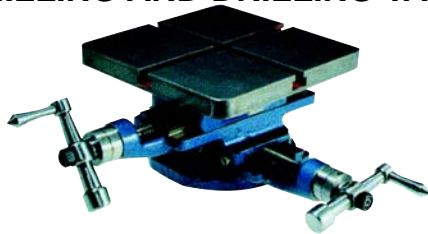


Descriptions	Model No.
10" inclineable rotary table	200-1915
12" inclineable rotary table	200-1917

Specifications	Maximum Variation (inches/second)
Clamping surface flatness(concave)	0.0006"
Cylindrical center bore concentricity	0.0008"
Taper center bore concentricity	0.0008"
Surface to base parallelism	0.0008"
Surface to angle face squareness	0.0004"
Surface to center slot squareness	0.0008"

Table OuterDia.	Table Height	Center Height	Base Dia.	Base Dia.	Width of T-slot	Locating Key	Centering Hole	Center Taper Hole	Weight	Model No.
D	H	H1	B	L	E	F	D			
9.81	8.07	5.51	10.24	12.2	0.47	0.55	1.2	MT-3	172	200-1915
12.6	10.04	6.89	13.07	14.96	0.55	0.71	1.6	MT-4	293	200-1917

## MILLING AND DRILLING TABLE



<b>Model No.</b>	201-2524
<b>Size</b>	7x7(Rotatable 360°)
<b>Height</b>	4-1/8"
<b>Travel</b>	4 on each axis
<b>Base Size</b>	4-5/8" diameter
<b>Mounting</b>	1-1/8" Long Base Bolt
<b>Weight</b>	35 lbs

Suitable for all kinds of precision machining operations. Easy to read dials are graduated in .001". Dovetail slides have adjustable steel gibs to compensate for wear. T-slots are 5/8" wide x 7/16" deep.

## COMPOUND SLIDING TABLE



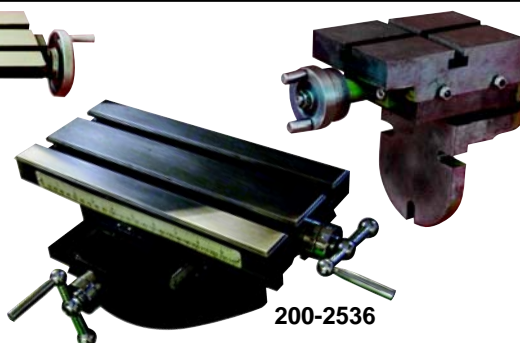
Description	Model No. 200-2707	Model No. 200-2708
Size of Table	11-13/16x7-7/8	7-7/8x7-7/8
Height Overall	5-1/2"	6-7/8"
Length Overall	20-3/32	13-25/32
Size of Slots	7/16	3/8
Sliding	7-7/8	4-29/32
Graduation	.001"	.001"
Weight (Approx.)	84lbs	44lbs

## COMPOUND SLIDE TABLES



200-2537

A heavy, rugged slide used in all kinds of positioning, milling, drilling, microscope viewing and staging, adjustable bases for heavy loads, small jig boring, precision cutter.



200-2536

cutter.

200-2535

Desc.	Model No. 200-2535	Model No. 200-2536	Model No. 200-2537
<b>Table</b>	4"x6"	5-1/2"x12"	6"x18"
<b>T-Slot Size</b>	3/8"	5/8"	5/8"
<b>Height</b>	6-7/8"	4-1/2"	5"
<b>Travel</b>	3-1/5"	6-1/2"/4-1/3"	13"/6"
<b>Base Size</b>	9"x8"	10-1/2"x8"	