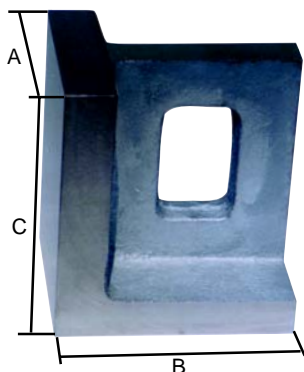


Machine Accessories

UNIVERSAL RIGHT ANGLE PLATES

Machined or Precision Ground



Made of finest quality, close grained semi-steel castings, stress relieved against distortion by annealing after seasoning. All outside surfaces closely finished for square and parallel references: Machined Square and parallel within 0.001 per 6". Precision ground: Square within 0.0005" per 6". Parallel within 0.00025" per 6".

A	B	C	Machined Finished Model No.	Grounded Finished Model No.
3-3/4"	4"	5"	418-4105	418-4205
4"	4"	6"	418-4110	418-4210
5"	5"	6"	418-4115	418-4215
4"	5"	8"	418-4120	418-4220
5"	8"	12"	418-4125	418-4225
5-1/2"	7"	10"	418-4130	418-4230
5-1/2"	8"	10"	418-4135	418-4235
6"	6"	8"	418-4140	418-4240
8"	10"	12"	418-4145	418-4245
8"	9"	16"	418-4150	418-4250
10"	12"	16"	418-4155	418-4255
12"	12"	24"	418-4160	418-4260

PLAIN ANGLE PLATES

Machined or Precision Ground

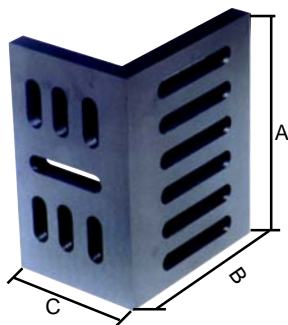


- Made from high tensile cast iron normalized and stress relieved.
- Machined: Flat and square within 0.002" per 6" for general work.
- Precision ground: flat and square within 0.0005" per 6" for layout and inspection or precision machine

Size	No. of Ribs	Machined Model No.	Grounded Model No.
2 x 2 x 2"	1	418-4310	418-4400
3 x 3 x 3"	1	418-4315	418-4415
4 x 4 x 5"	2	418-4320	418-4420
5 x 5 x 5"	2	418-4325	418-4425
6 x 6 x 6"	2	418-4330	418-4430
8 x 8 x 8"	2	418-4335	418-4435
10 x 10 x 10	2	418-4340	418-4440
12 x 12 x 12	2	418-4345	418-4445

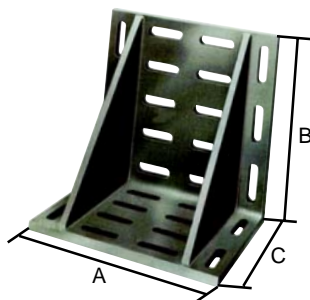
SLOTTED ANGLE PLATES

- Made of high tensile cast iron properly seasoned against distortion.
- webbed style accurately machined, square parallel on outside faces and ends.
- Open end style accurately machined square and parallel on a ll faces.



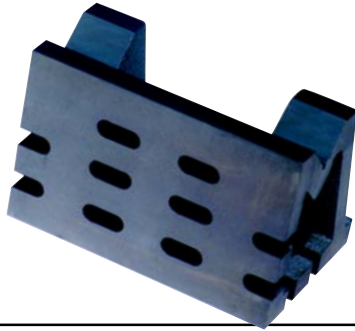
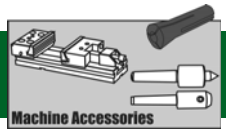
Dimensions A	Dimensions B	Dimensions C	Webbed Machined Model No.	Webbed Ground Model No.	Open end Machined Model No.	Open end Ground Model No.
3"	2-1/2"	2"	418-4510	418-4612	418-4712	418-4812
3-1/2"	3"	2-1/2"	418-4515	418-4617	418-4717	418-4817
4-1/2"	3-1/2"	3"	418-4520	418-4622	418-4720	418-4822
6"	5"	4-1/2"	418-4525	418-4627	418-4725	418-4827
7"	5-1/2"	4-1/2"	418-4530	418-4632	418-4730	418-4832
8"	6"	5"	418-4535	418-4637	418-4735	418-4837
9"	7"	6"	418-4540	418-4642	418-4740	418-4842
10"	8"	6"	418-4545	418-4647	418-4745	418-4847
12"	9"	8"	418-4550	418-4652	418-4750	418-4752

GIANT SLOTTED ANGLE PLATES



- Made from high tensile cast-iron normalized and stress relieved.
- Machined flat and square within 0.002" per 6" for general work.

Dimensions A	Dimensions B	Dimensions C	Model No.
16"	12"	9"	418-4916
20"	16"	12"	418-4920
24"	24"	18"	418-4924
36"	24"	24"	418-4936

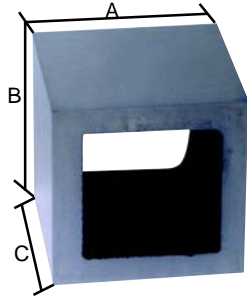


VEE ANGLE PLATE

The V-Angle is manufactured from a high grade cast iron that is fully stress relieved to give stability though out its working life.

The V-Angle has many more clamping positions than an ordinary angle plate. Its design allows almost any shape to be clamped securely, and all types of clamps to be used.

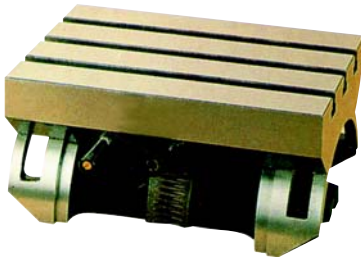
Size	Model No.
3 x 3 x 5"	418-4905
4 x 4 x 6"	418-4906
5 x 5 x 7"	418-4907
6 x 6 x 8"	418-4908



BOX PARALLELS

- Made of high quality fine grained cast iron, stress relieved.
- All faces and ends finished square and parallel.
- Machined finish-Size + or -0.015". Square and parallel within 0.002" per 6".
- Ground finish - Size + or - 0.002" Square and parallel within 0.0005" per 6".

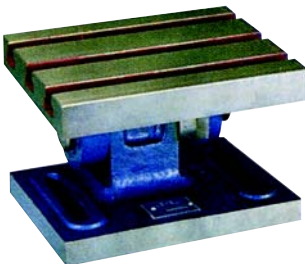
A	B	C	Wall		Machined	Grounded
			Thickness	Wt (lbs)	Model No.	Model No.
4"	4"	5"	5/8"	12	418-4000	418-4020
4"	4"	6"	3/4"	16	418-4002	418-4022
4"	6"	6"	3/4"	20	418-4004	418-4024
5"	5"	5"	3/4"	17	418-4006	418-4026
5"	10"	10"	3/4"	73	418-4008	418-4028
6"	6"	6"	3/4"	25	418-4010	418-4030
6"	6"	8"	3/4"	35	418-4012	418-4032
6"	12"	12"	3/4"	105	418-4014	418-4034
8"	8"	8"	5/8"	71	418-4016	418-4036
10"	10"	10"			418-4018	418-4038



ADJUSTABLE ANGLE PLATES

Heavy machined casting. Adjustable 45 in either direction. Crank handle for easy and precise adjustment.

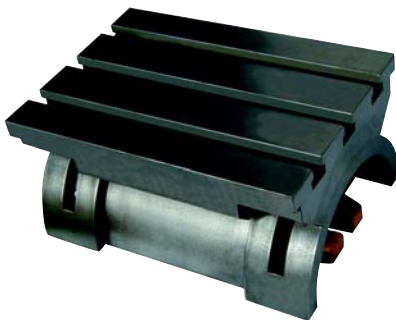
Plate Size (In)	Height (In)	T-Bolt (In)	Model No.
5 x 7	3-7/8	3/8	200-1105
7 x 10	5-3/16	7/16	200-1110
9 x 12	6-7/16	7/16	200-1112
10 x 15	7-3/8	5/8	200-1115
12 x 24	8-1/8	5/8	200-1124



SWIVEL ANGLE TABLES

- Adjustable heavy castings.
- Rugged construction.
- Machined "T" slots.
- SAVES job set-up time in operation.
- Graduated for 90 tilt.
- Accuracy of table surface

Size	Height	Model No.
5 x 6"	4"	200-1305
6 x 8"	5"	200-1306
8 x 10"	6"	200-1308
10 x 12"	7"	200-1310



SWIVEL ANGLE PLATES

- Perfect for setting work at any angle during milling or other operations.
- Heavy rugged graded casting.
- Machined "T" slots.
- Graduated 90 for setting 45 on each side.
- Accuracy of table surface 0.0005".

T-Slot	Size	Height	Model No.
1/2"	5 x 7"	3-3/4"	200-1205
1/2"	7 x 10"	5"	200-1207
3/5"	10 x 15"	6-3/4"	200-1210